

# ExergInc Group

FES-SCZ-CHP-SES-SWF

## The BIM 'eSCape' Lifecycle

Our Digital Future - It's Childs Play!

## Contents

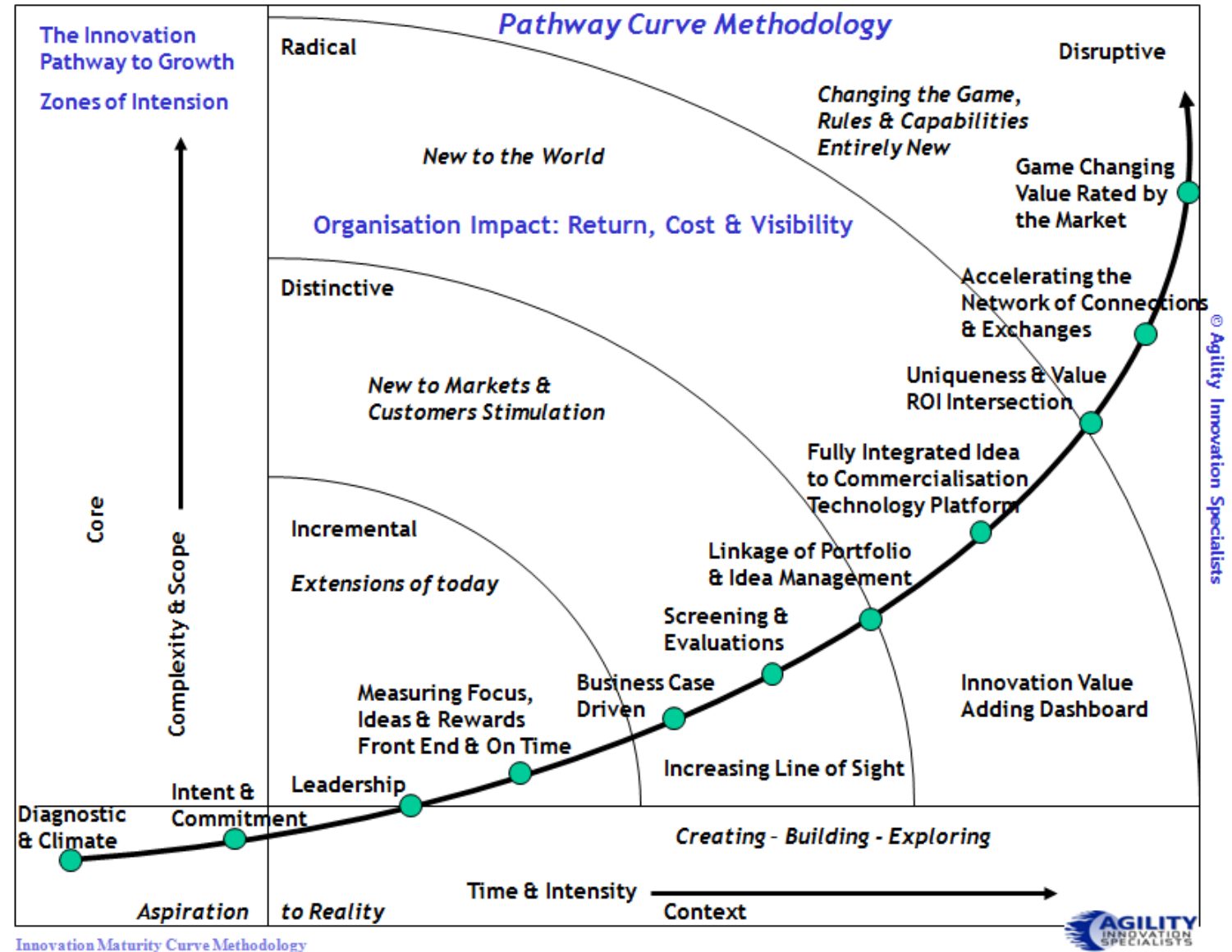
1. Digital by Design - The BIM 'eSCape' Lifecycle [Infographic - ExergInc/FuturEnergSystems Digital-Engineering Infographic](#)
2. The Innovation Curve
3. Servicing The Built Environment
4. Regeneration using Digital Engineering & Delivery
5. The BIM 'eSCape' Lifecycle
6. It's all about Knowledge Creation.....& what we do with it!
7. Regeneration using Digital Engineering & Delivery
8. Integrated Programme/Project Analytics & Controls
9. 6D 132kV GIS Grid Integrated GIS Substation Design, & Build
10. 5D 132kV Cable Tunnel Layout Design & Engineering - Space Proofing
11. 4D 11/33kV Subterranean Cable Layout Design & Engineering
12. 3D Site Layout Integration Design & Engineering

Digital by Design - The BIM 'eSCape' Lifecycle **Infographic** -  
[ExergInc/FuturEnergySystems Digital-Engineering Infographic](#)

Innovation for the future – what about now?

Digital Design & Engineering

How aspirational and inspirational will we be?



# 3. Servicing The Built Environment



Britain's future is as a knowledge economy

### 3. Servicing The Built Environment

Regenerating our energy systems our villages, towns and cities – **we create the built environment!**

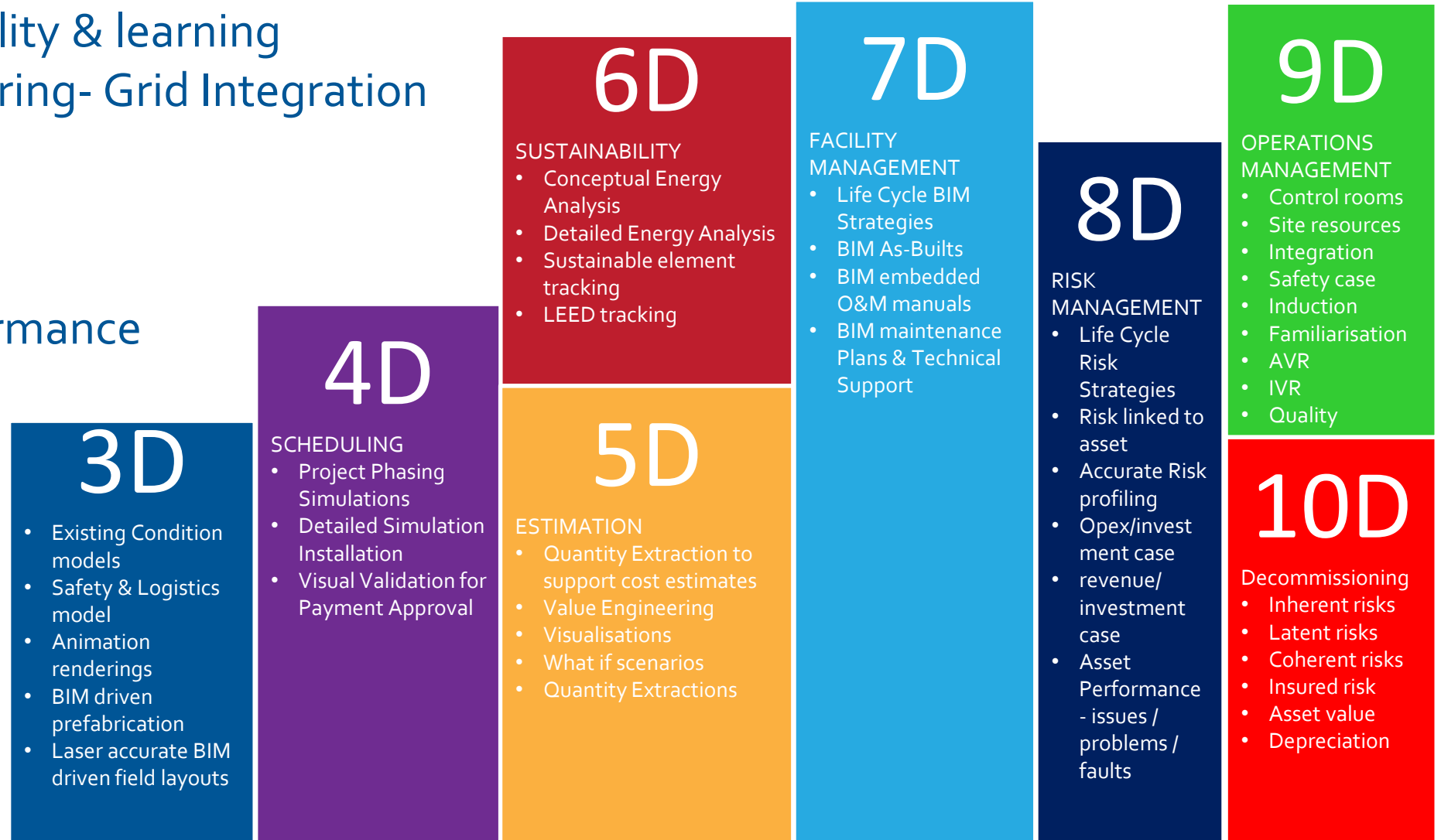




## BIM Lifecycle – what's the limit, how aspirational are we?

- Safety, sustainability & learning
- Design & Engineering- Grid Integration
- Sustainability
- Construction
- Value Creation
- Investment Performance
- Attribute based evidence

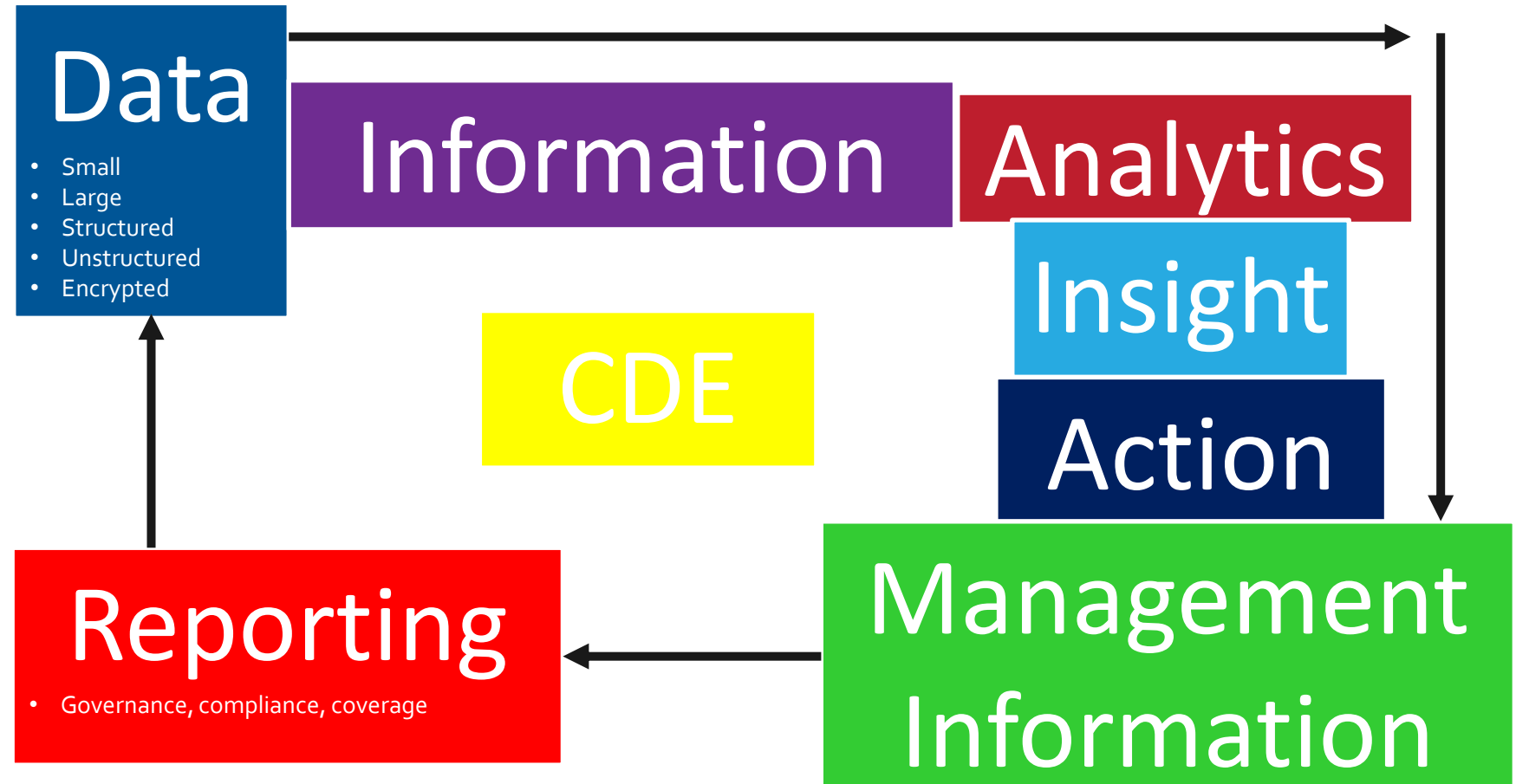
### Multi-Dimensional DATA (MDA) Creation





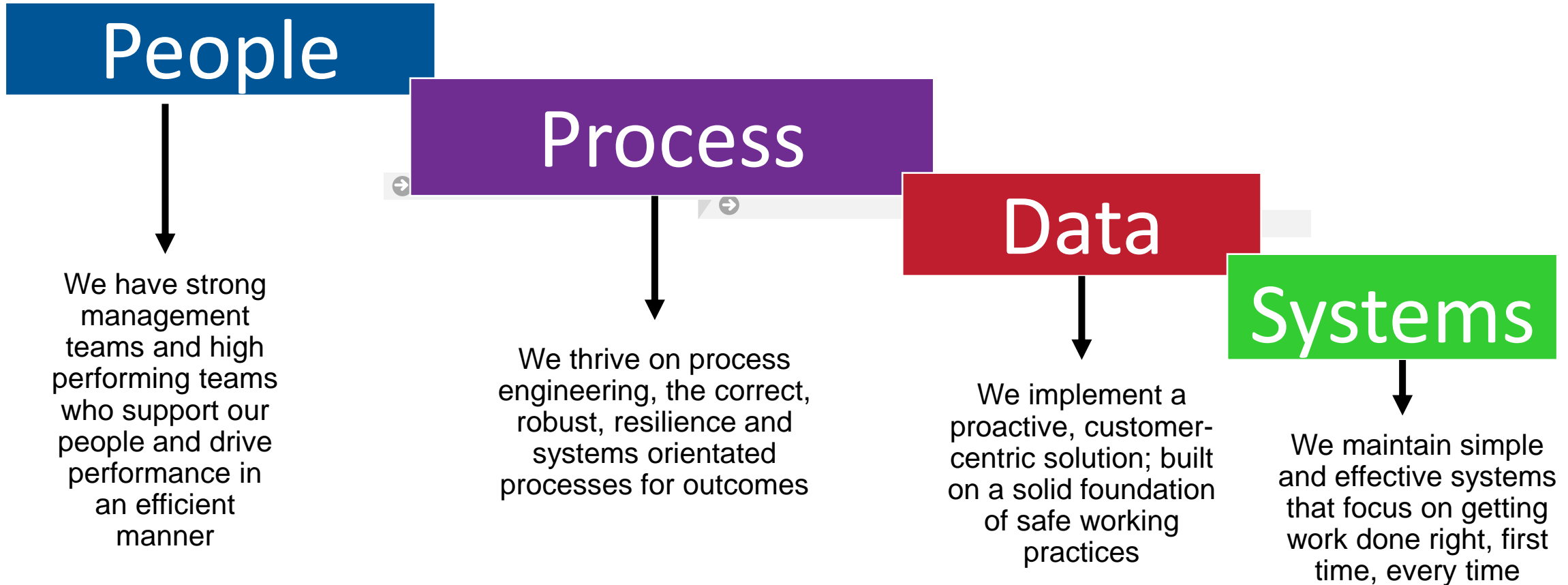
## Value Creation, Attribute based Knowledge and Evidence

Closing  
The  
Knowledge  
- Gap -



Multi-Dimensional DATA (MDA) Creation

## Delivery: Data, Knowledge and Digital Systems



**KNOWLEDGE ECONOMY: DATA UNDERPINS EVERYTHING WE DO. DATA INFORMS OUR BUSINESS, OUR CUSTOMERS AND OUR STAKEHOLDERS. WE ARE ABLE TO MAKE INFORMED BUSINESS CRITICAL DECISIONS TIMELY AND WITH CERTAINTY. DATA ARRANGED AS INFORMATION, ANALYSED AS INSIGHT DRIVES THE GROWTH AND DEVELOPMENT OF OUR BUSINESS TO PROVIDE EXEMPLAR SERVICE TO OUR CLIENTS, OUR CUSTOMERS AND OUR STAKEHOLDERS.**

# Integrated Programme Controls – Key Functions and Benefits

**Baseline Control** – ability to set the “way” for controlling scope/schedule/cost/risk throughout design development and delivery, via an “automated” and “integrated” Programme Controls framework

**Change Management** – ability to control changes to the baseline and make effective change decisions via access to high quality, real-time baseline information

**Integrated cost/time performance** – ability to measure performance vs baseline via application of a single, consistent framework across Phase One and Phase Two

**Supplier performance and payments** – ability to effectively administer multiple contract forms, including MWCC NEC Option C contracts, via client access to structured cost and time data (e.g. to verify work, to make faster payments and to assess performance against target)

**Intelligent Client analysis** – ability to analyse controls data, drive value for money across contracts, deliver effective assurance and transfer knowledge between Phase One and Phase Two

**Operations and maintenance** – ability to build maintenance and operations data from the outset by integrating asset information and programme controls

# Integrated Programme Controls – Key Functions and Benefits

**Management Information and Decisions** – improved quality reporting and decision-making, performance measurement, visibility of early warnings and appropriate use of contingency

**Forecasting** – improved coordination of phases and functions, including resources and budgets

**Efficiency** – reduced manual workarounds and work flows

**Performance improvement** – use of comparator data sets / progressive benchmarks to support and challenge suppliers

**Faster payments** – reduced payment periods to ensure compliance with NEC.

**Resilience** – improved data management, configuration and security, reduced risk of manual error

**Interfaces** – visibility of scope / contract interfaces

**Scalability** – systems are scalable to meet the increasing volumes across design/development lifecycle

**Accessibility** – single source of truth accessible to all owning and interested parties, including suppliers

**Assurance** – high quality, value-adding assurance via “analysis and analytics”, as opposed to sample checking for compliance

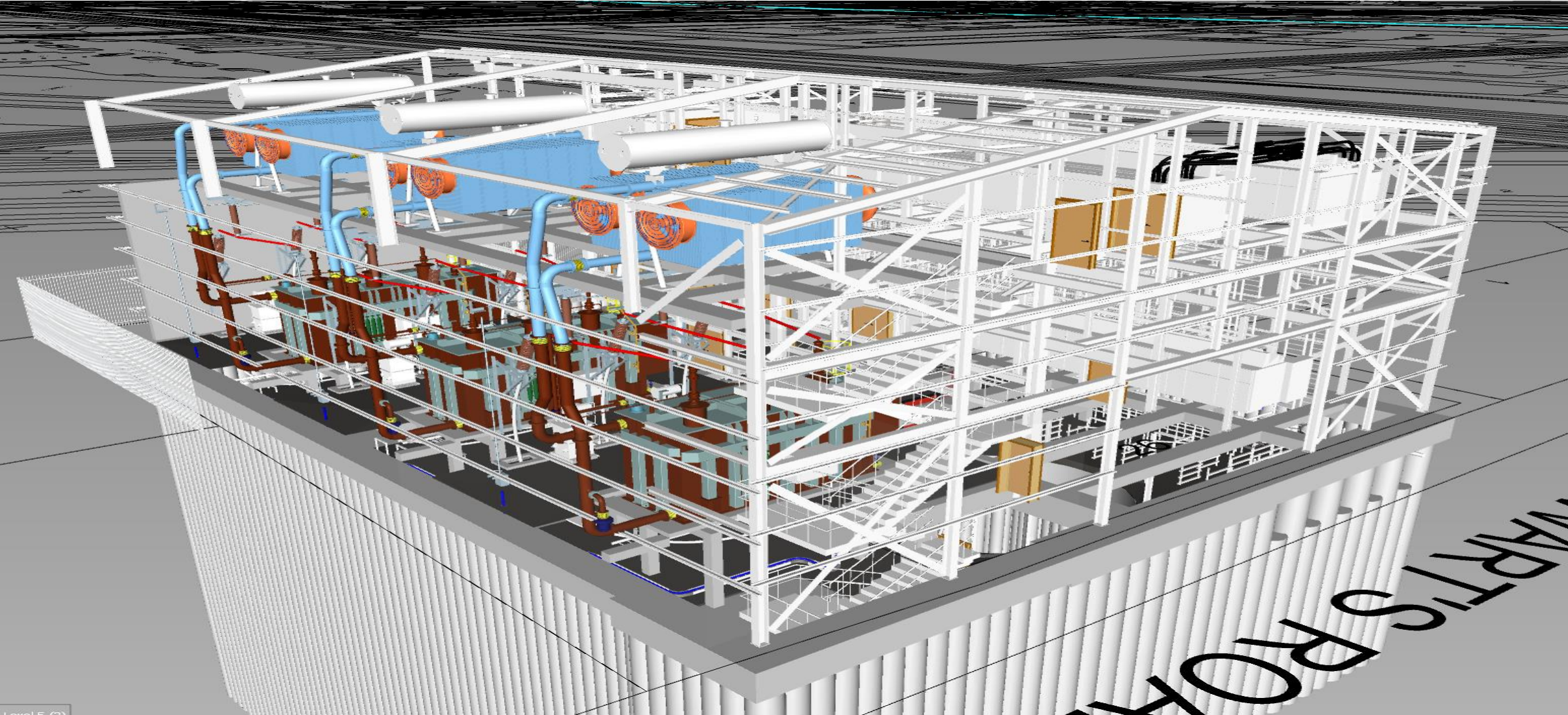
**Some real-life  
examples that we  
have  
designed/developed  
/delivered!**

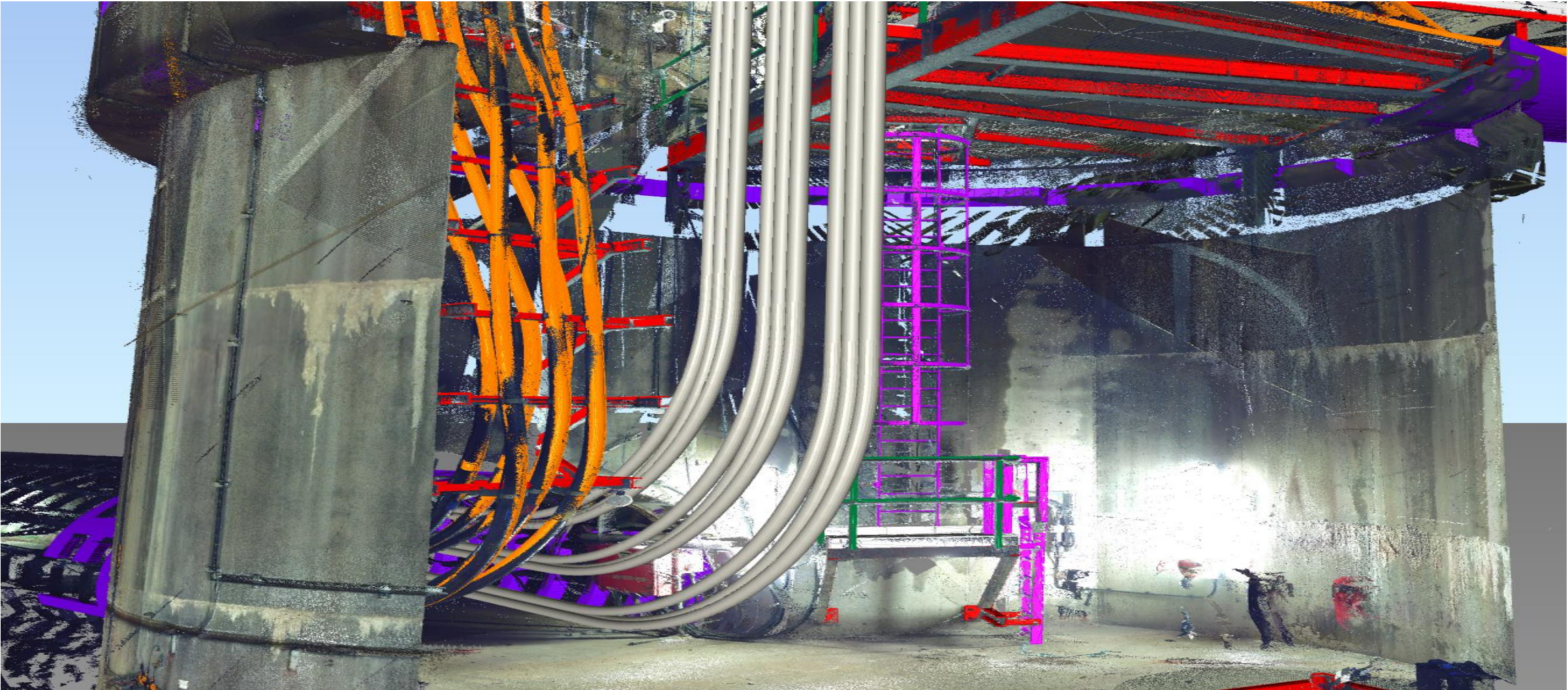
# 9. 6D 132kV GIS Grid Integrated GIS Substation Design, & Build



ExergInc Group

FES-SCZ-CHP-SES-SWF



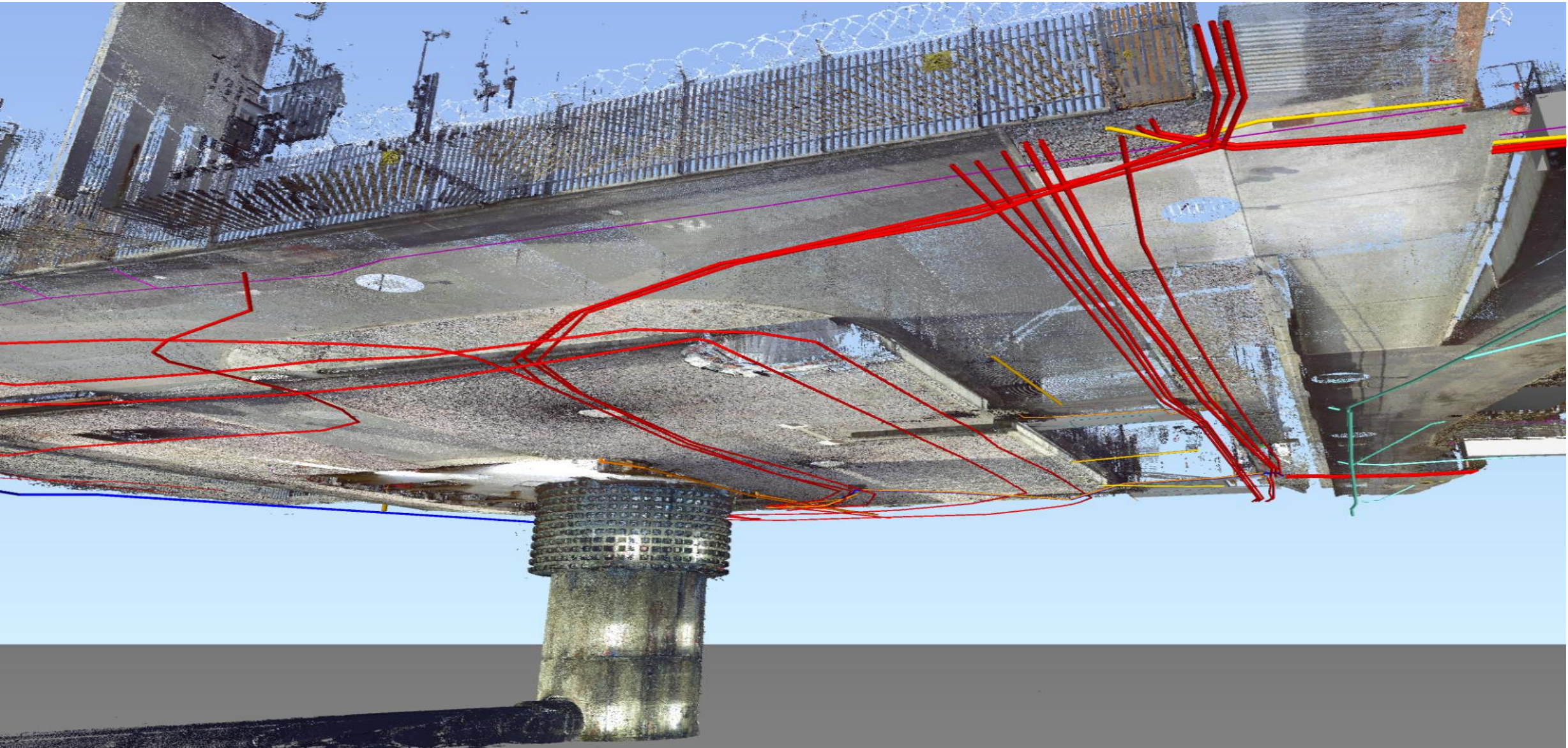


# 11. 4D 11/33kV Subterranean Cable Layout Design & Engineering



ExergInc Group

FES-SCZ-CHP-SES-SWF





# 12. Site Layout Integration Design & Engineering





It's child's  
play really!



*Powering the Energy Transition for a Sustainable Future*

**Creating today, Delivering tomorrow.**

FuturEnergySystems Ltd part of the ExergInc Group Companies





# ExergInc Group

FES-SCZ-CHP-SES-SWF

*Power, Energy & Renewables*